

FL!KT

FOLDABLE HAIR DRYER USER MANUAL



Please read the user manual carefully before use
and keep it for future reference.

CONTENTS

- 1 x Hair Dryer
- 1x Regular Nozzle
- 1x Large Nozzle
- 1 x Diffuser

ATTACHMENTS



Regular Nozzle



Large Nozzle



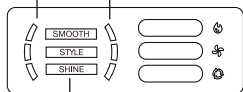
Diffuser

BREAKDOWN OF BUTTONS



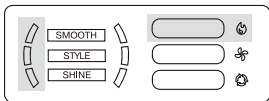
Temperature Control
(three levels)
60°C/90°C/120°C

Air Flow Control
(three levels)
Low/Medium/High

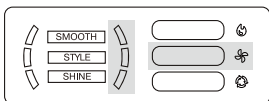


Functional Modes
(three levels)

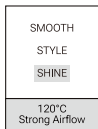
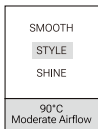
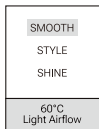
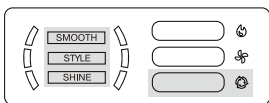
TEMPERATURE CONTROL (THREE LEVELS)



AIRFLOW CONTROL (THREE LEVELS)

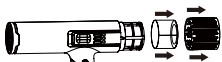


FUNCTIONAL MODE (THREE LEVELS)

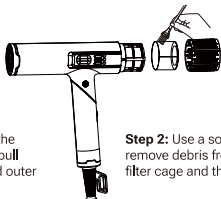


CLEANING

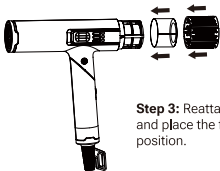
ENSURE THAT YOU UNPLUG YOUR APPLIANCE FROM THE MAIN ELECTRICAL SUPPLY BEFORE CLEANING THE FILTER.



Step 1: Hold the handle of the hair dryer firmly and gently pull the magnetic filter cage and outer filter away.



Step 2: Use a soft brush to remove debris from both the filter cage and the filter mesh.



Step 3: Reattach the filter cage and place the filter back into position.

- The product can be cleaned with a dry cloth.
- The attachments can be cleaned with a moist cloth or rinsed under a running tap.
- Remove the attachments from the product before cleaning them.
- Make sure the attachments are dry before using or storing them.
- Never rinse the product with water.

STORAGE

- When not in use, unplug the product.
- Allow the product to cool before storing it in a dry location.
- Never wrap the cord around the product as this will cause the cord to wear prematurely and break. If the supply cord of this product becomes damaged, the product must be replaced by returning to the retailer from which the product was purchased or a similarly qualified person in order to avoid a hazard.

IMPORTANT INSTRUCTIONS

BEFORE USING THIS PRODUCT, PLEASE READ THE INSTRUCTIONS AND CAUTIONARY MARKINGS IN THIS MANUAL AND ON THE PRODUCT AND RETAIN FOR REFERENCE.

When using electrical products, especially when children are present, basic safety precautions should always be followed, including the following:

WARNING: KEEP AWAY FROM WATER

As with most electrical products, electrical parts are electrically live even when the switch is off.

1. Do not use this product near bathtubs, showers, basins, or other vessels containing water.
2. Do not use the product with wet hands.
3. Do not place or store the product near water.
4. Do not immerse or put under running water, even for cleaning purposes.
5. Do not place in or drop into water or other liquid.
6. Do not reach for the product if it falls into water.
7. Do not leave product in reach of children.

The product can be used by children aged from 8 years and above and persons with reduced physical, sensory or reasoning capabilities, or lack of experience and knowledge, only if they have been given supervision or instruction by a responsible person concerning the use of the product in a safe way and understand the hazards involved.

Cleaning and user maintenance shall not be made by children without supervision.

Do not allow the product to be used as a toy. Close attention is necessary when used by or near children. Children should be supervised to ensure that they do not play with the product.

This product has a non-self-resetting thermal cut out safety device to prevent overheating. If the product cuts out, unplug it from the mains supply socket and leave it to cool.

CAUTION: In order to avoid a hazard due to inadvertent resetting of the thermal cut-out, this product must not be supplied through an external switching device, such as a timer, or connected to a circuit that is regularly switched on and off by the utility company, or plugged into any socket where the electrical supply is unstable or likely to be turned off. When the product is used in a bathroom, unplug it after use since the proximity of water presents a hazard even when the product is switched off. For additional protection when the product is used in a bathroom, it is recommended that a Residual Current Device (RCD), with a residual operating current not exceeding 30 mA is installed in the electrical circuit supplying the bathroom. Contact a qualified electrical installer for advice.

Do not use any lubricants, cleaning agents, polishes or air fresheners on any part of the product.

WARNING: ALL ATTACHMENTS CONTAIN MAGNETS. TO REDUCE THE RISK OF FIRE, ELECTRIC SHOCK OR INJURY: KEEP AWAY FROM PACEMAKERS, DEFIBRILLATORS, CREDIT CARDS AND ELECTRONIC STORAGE MEDIA.

RECYCLING

The symbol on the product or on its packaging indicates that this product may not be treated as household waste. Instead, it should be handed to an appropriate collection point for the recycling of electrical and electronic equipment. For more detailed information about the recycling of this product, please contact your local council office or your household waste disposal service.

SAFETY

Important safety guidelines and recommendations for using this product:

1. Never leave this product unattended when it is plugged in. Always remember to unplug it immediately after use.
2. Close supervision is necessary if the product is being used by children or individuals with certain disabilities.
3. Avoid blocking the air openings of the product and refrain from placing it on soft surfaces such as beds or couches, as this could block the air circulation.
4. Ensure that all the air openings remain free and unobstructed while using the product.
5. Avoid dropping any objects or inserting them into any openings or attachments of the product.
6. Do not use the product outdoors or in environments where aerosol (spray) products are being used or oxygen is being administered.
7. Directing hot air from the product towards the eyes or other heat-sensitive areas should be avoided.
8. Take caution when handling attachments, as they may become hot during use. Allow them to cool down before storing them away.
9. While the product is in operation, avoid placing it on sensitive surfaces to prevent any damage.
10. Keep your hair away from the air inlet of the product during use.
11. Do not use the product with a voltage converter or an extension cable.
12. The product should only be used for drying and styling your hair and should not be used for any other purpose.
13. Use only attachments recommended by FLIKT. Using unapproved attachments may pose a risk.
14. If the product is not functioning properly, has a damaged cord or plug, has experienced a sharp impact, has been dropped, damaged, left outdoors, or submerged in water, do not use it. Contact customer services for further guidance.
15. Avoid handling the plug or product with wet hands to prevent an electric shock.
16. Do not attempt to disassemble the product, as improper reassembly can lead to electric shock or fire hazards.
17. The product should not be used on synthetic hair.
18. This product is intended for indoor use only.
19. Never use it on someone who is sleeping.
20. Never drop or insert any object into any opening.
21. If you smell a burning smell, unplug and discontinue.
22. Do not use at room temperatures below 0°C.
23. Do not connect to the same electrical circuit as an electrical device with high power consumption.

CABLE SAFETY

These guidelines prioritise safety and proper handling of the power cable, aiming to prevent accidents and maintain the cable's functionality.

1. Check for damage: Before using the power cable, carefully inspect it for any signs of damage. If you notice any damage, do not use the cable.
2. Professional repair: If the supply cable is damaged, it should be replaced or repaired by the manufacturer, their service agent, or someone qualified to handle such repairs. This is important to prevent any potential hazards.
3. Avoid strain: Do not stretch the power cable or subject it to any strain. It should be kept free from any tension or pressure that could lead to damage.
4. Keep away from heat: Ensure that the power cable is not in close proximity to heated surfaces. Heat can potentially damage the cable, so it's important to maintain a safe distance.
5. Proper storage: When not in use, avoid wrapping the cable around the product or any other device. Improper coiling can cause damage to the cable and affect its functionality. Fold the cable together neatly and secure with the velcro fastening.
6. Safe unplugging: When unplugging the cable from the mains supply, avoid pulling on the cable itself. Instead, firmly grasp the plug and disconnect it safely. Pulling on the cable can lead to damage or electrical hazards.
7. Regular inspections: It is recommended to inspect the cable before each use. This will help identify any potential damage or issues that may have occurred since the last inspection, ensuring safety during operation.